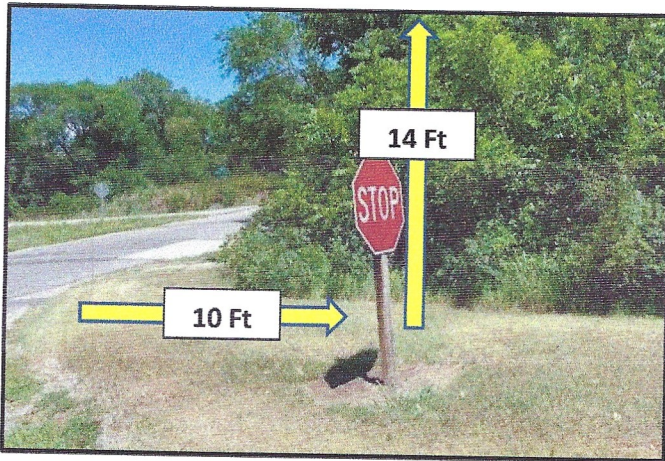
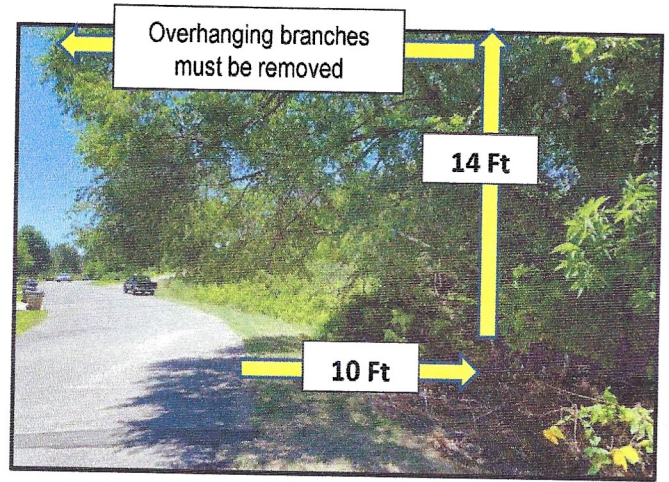


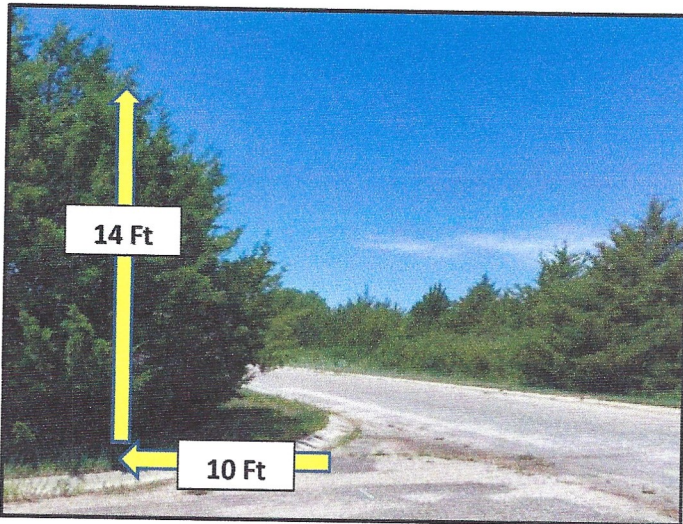
## MAINTENANCE OF CITY RIGHT-OF-WAYS



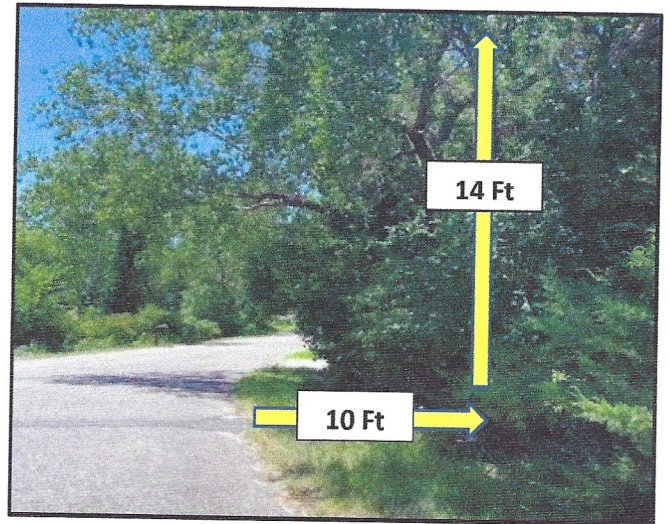
Trees and vegetation create a blind corner at some stop signs and need to be trimmed back to improve visibility.



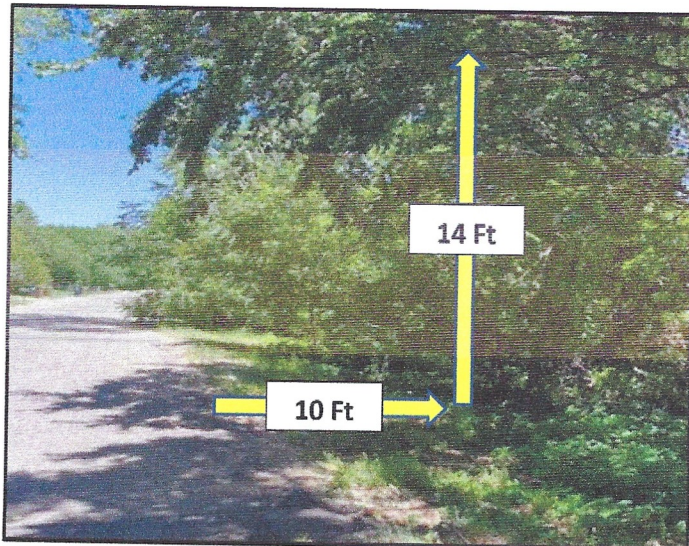
The tree branches overhang the road causing trucks to swerve into the opposite lane and on coming traffic. The branches also create obstacles for the mowers.



Trees block visibility and create a blind corner for on-coming traffic and they need to be trimmed back to improve safety.



The tree branches overhang the road and create obstacles for trucks and mowers.



The tree branches overhang the road and create obstacles for trucks and mowers.



The drainage culvert has become blocked.